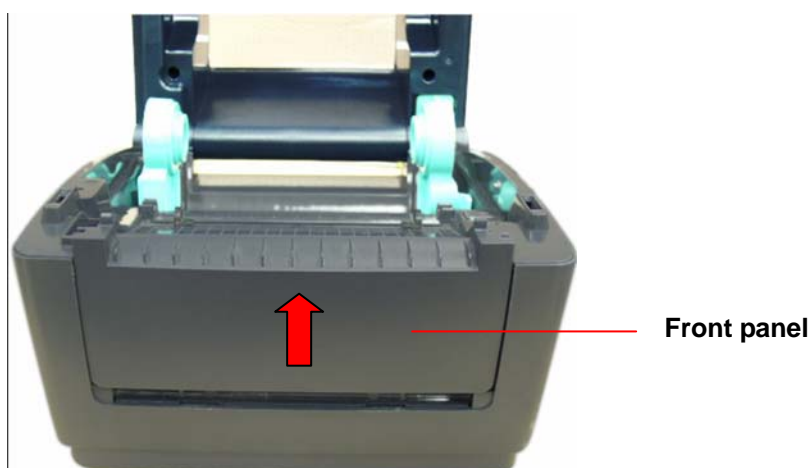


Cutter Module Quick Installation Guide (Option)

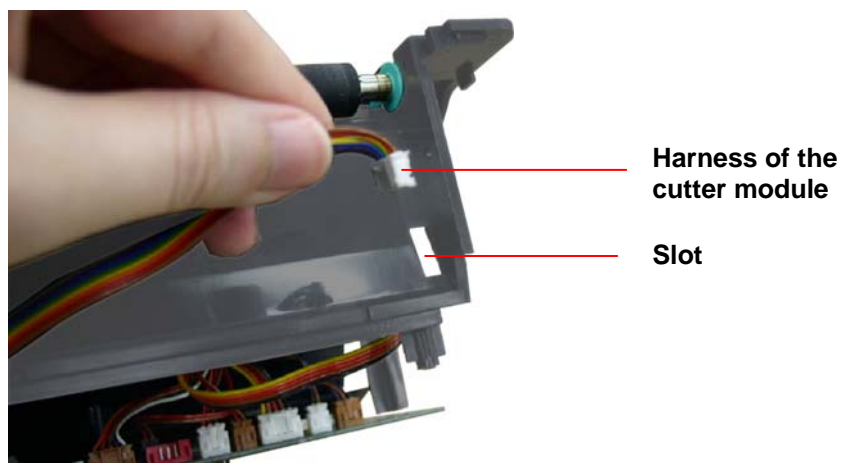
1. Turn the printer upside down and use the Phillips screwdriver to remove the 6 screws. Remove the lower cover.



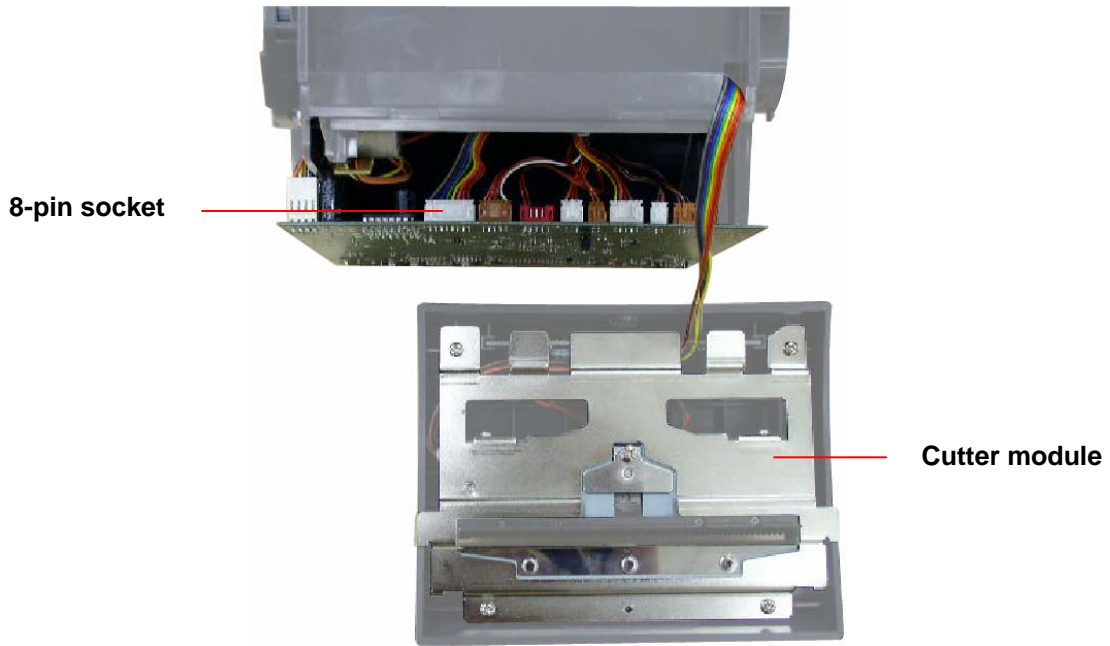
2. Open the top cover and pull up the front panel from the printer.



3. Thread the cutter module 8-pin harness through the front slot of lower inner cover.

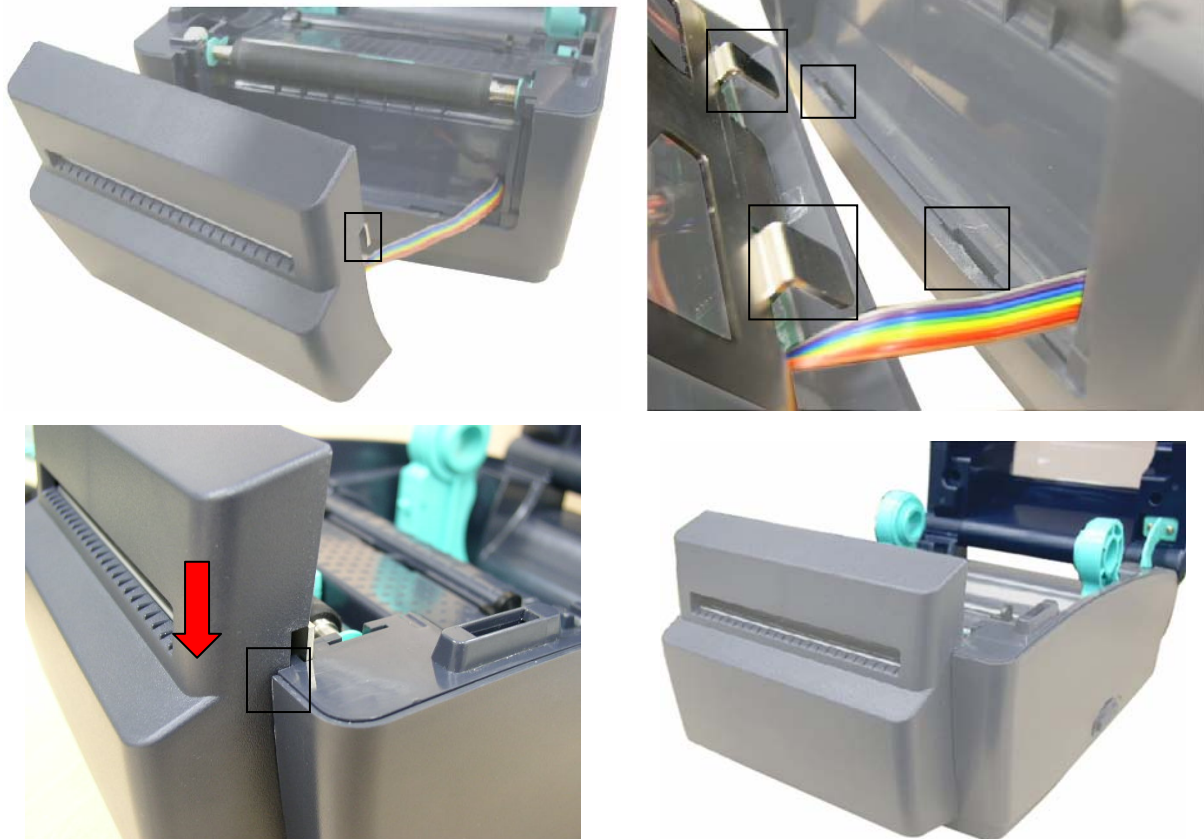


4. Connect the cutter module harness connector to the 8-pin white socket on the printer main board.



5. Then, put back the lower inner cover.

6. Place the cutter module into the both sides notches of lower inner cover as picture below, then push cutter to lock into the lower inner cover.



7. Close the top cover and then upside down the printer.

8. Fasten the 6 screws at the lower inner cover.

9. Place the printer in the flat and secured desktop for media loading and printing.